

For Sale on Market

\$999,000

Call (713) 857-9156 Today!

LOTS

A rare and exclusive 1.1-acre WATERFRONT lot in the gated and private community of The Orchard subdivision in the heart of Sugar Land. An ideal location for a luxurious custom-built home with a beautiful lakefront. This lot sits right next to The Imperial Sugar historical landmark. Zoned to Fort Bend ISD. Easy access to Hwy 59, 90/Main, Hwy 6, & Beltway 8.

GENERAL DESCRIPTION

Subdivision: The Orchard

Property Type: Lots

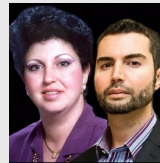
Lotsize: 47,578 / Appraisal District

Maintenance Fee: \$1,850 / Annually

Market Area: Sugar Land North

Key Map: 568K

MLS# / Area: 37049271 / 29



Get in touch
Sammy Younis

(713) 857-9156



RE/MAX Southwest

(281) 491-1776

503 Orchard Lane, Sugar Land, TX 77498

Visit <https://www-v2.har.com/37049271> for more information